

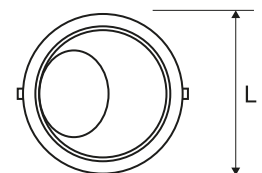
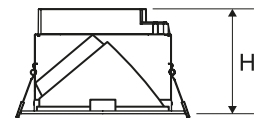
Decorative downlight luminaire for suspended ceilings, degree of water and dust-proof IP20 and IP44/20, with asymmetric reflector for LED light sources.

| | |
|------------------------|--|
| TECHNICAL DATA | Mounting: in the ceiling, with mounting brackets (included) |
| | Body: aluminum |
| | Colour: white |
| | Diffuser: opal |
| ELECTRICAL DATA | Power supply efficiency: 92% |
| | Power: 220-240V 50/60Hz |
| | Includes light source: yes |
| | Type of equipment: ED |
| | Electrical connection: max 3x2,5 mm ² wire |
| OPTICAL DATA | Light distribution: asymmetric |
| | Way of lighting: direct |
| | Reflector: polished |
| GENERAL DATA | Lifetime (L80B10): 50 000 h |
| | Operating temperature range: 0°C ... +35°C |
| | Warranty: 3 years |
| | Application: shopping centers, delicatessen, exhibitions, boutiques, galleries, jeweler, halls, hotels, museums, supermarkets |



| Code | Replacement of conventional technology [W] | Power LED [W] | Luminaire power [W] | Lumen LED [lm] | Lumen luminaire [lm] | Efficacy [lm/W] | Colour temperature [K] | CRI/Ra |
|---|--|---------------|---------------------|----------------|----------------------|-----------------|------------------------|--------|
| Degree of water and dust protection: IP20 | | | | | | | | |
| 300031.00073 | 2x18W (48W) | 16 | 18 | 2300 | 1800 | 100 | 3000 | ≥80 |
| 300031.00074 | 2x18W (48W) | 16 | 18 | 2300 | 1800 | 100 | 4000 | ≥80 |
| 300031.00075 | 2x26W (64W) | 22 | 24 | 3000 | 2400 | 100 | 3000 | ≥80 |
| 300031.00076 | 2x26W (64W) | 22 | 24 | 3000 | 2400 | 100 | 4000 | ≥80 |
| Degree of water and dust protection: IP20/44 | | | | | | | | |
| 300031.00077 | 2x18W (48W) | 16 | 18 | 2300 | 1800 | 100 | 3000 | ≥80 |
| 300031.00078 | 2x18W (48W) | 16 | 18 | 2300 | 1800 | 100 | 4000 | ≥80 |
| 300031.00079 | 2x26W (64W) | 22 | 24 | 3000 | 2400 | 100 | 3000 | ≥80 |
| 300031.00080 | 2x26W (64W) | 22 | 24 | 3000 | 2400 | 100 | 4000 | ≥80 |

| Code | Dimensions [mm] L H | Mounting dimensions [mm] ØS | Pallet quantity | Quantity in package | Net weight [kg] |
|---|------------------------|--------------------------------|-----------------|---------------------|-----------------|
| Degree of water and dust protection: IP20 | | | | | |
| 300031.00073 | 240 160 | 215 | 132 | 1 | 0.7 |
| 300031.00074 | 240 160 | 215 | 132 | 1 | 0.7 |
| 300031.00075 | 240 160 | 215 | 132 | 1 | 0.7 |
| 300031.00076 | 240 160 | 215 | 132 | 1 | 0.7 |
| Degree of water and dust protection: IP20/44 | | | | | |
| 300031.00077 | 240 160 | 215 | 132 | 1 | 0.7 |
| 300031.00078 | 240 160 | 215 | 132 | 1 | 0.7 |
| 300031.00079 | 240 160 | 215 | 132 | 1 | 0.7 |
| 300031.00080 | 240 160 | 215 | 132 | 1 | 0.7 |



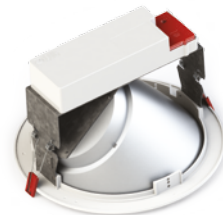
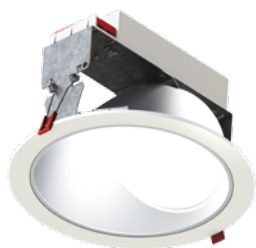
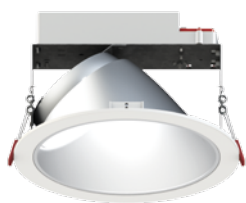
Luminous flux tolerance +/- 10%.

Power tolerance +/- 5%.

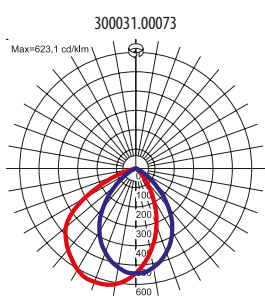
Lighting beam, light intensity distribution and light efficiency were examined in accordance with the EN ISO 17025:2005 norm for EN13032 norm series and the LM-79 norm.

Up-to-date product info available on our website www.lugbox24.com

OTHER PICTURES

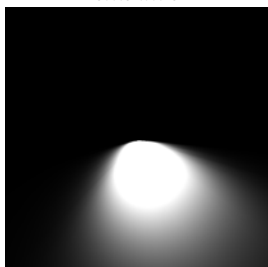


LIGHT BEAM CURVES



WAY OF LIGHTING

300031.00073



Luminous flux tolerance +/- 10%.
Power tolerance +/- 5%.

Lighting beam, light intensity distribution and light efficiency were examined in accordance with the EN ISO 17025:2005 norm for EN13032 norm series and the LM-79 norm.
Up-to-date product info available on our website www.lugbox24.com

Date of issue: 6-6-2018

The LUG Company reserves right to introduce any construction changes and improvements into the lighting luminaires